

RCM 700 Sureclose Actuators



The Failsafe Electro/Hydraulic Actuator consists of a single acting spring return actuator for fail safe operation, mounted electric motor, hydraulic pump and reservoir. The actuator is modified for hydraulic service which includes a bleeder to purge air from the system. The pump is driven by a totally enclosed fan cooled single phase motor. In the event of a power loss, the valve will automatically go to the fail position (counter-clockwise or clockwise) by means of the springs in the actuator.

OPTIONS

- Increased or reduced speeds
- M-1 handwheel manual overrides
- Explosion – proof motors, switches and solenoid valves
- Wash down motors
- Heater and thermostats
- Single phase –120 VAC, 220 VAC, 3-phase voltages
- 4-20MA DC 0 –10 VDC, or 1-5 VDC for modulation
- 4-20MA DC feedback
- Other voltages available on request

NOTE: We prefer to quote actuator to valve mounting hardware in all cases since the power unit reservoir and actuator are provided as a package.

FEATURES

- Springs equal to 100 PSI torque output
- Limit switch to shut down pump when valve reaches open/closed position
- Two additional switches for open/close indication
- Painted carbon steel mounting brackets unless specified otherwise
- 4-20MA positioners in either weather or explosion proof versions



TECHNICAL DATA

Pump: Gear-Type pump, capacity 3.70 gallons/minute M404 Model.
Opening and closing stroke times at +70° F ambient temperature.

| | |
|---------------------------|-------------------|
| RCI 230SRH-100/M404 | 3 – 5 seconds |
| RCI 240SRH-100/M404 | 5 – 10 seconds |
| RCI 250SRH-100/M404 | 10 – 15 seconds |
| RCI 260SRH-100/M404 | 15 – 20 seconds |
| RCI 265SRH-100/M404..... | 25 – 35 seconds |
| RCI 270SRH-100/M404 | 35 – 50 seconds |
| RCI 280SRH-100/M404 | 75 – 100 seconds |
| RCI 88SRH-100/M404 | 250 – 300 seconds |
| RCI 90SRH-100/M404 | 150 – 200 seconds |
| RCI 100SRH-100/M404 | 250 – 300 seconds |

NOTE: Failure and power stroke times can be altered through variations of the standard package.

Pump Pressure

Factory set between 100 and 140 PSI

Motor

1/2 HP, 3450 RPM, 115/230/60, single phase

Operating Temperature Range

-5° F to 130° F

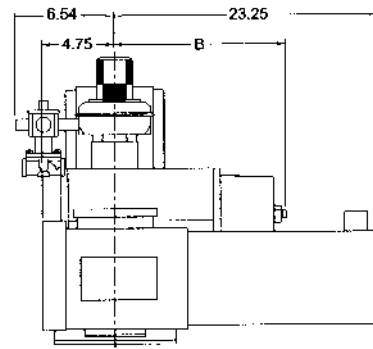
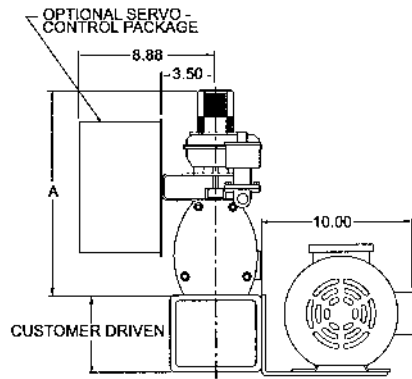
Oil Type

Mobil DTE 24 or equivalent

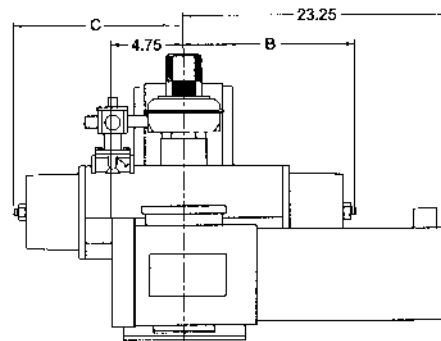
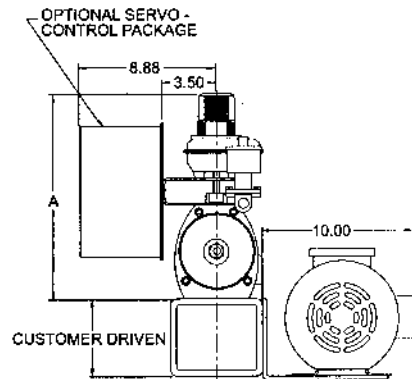
TORQUE OUTPUT

*Larger torques available on request – POA

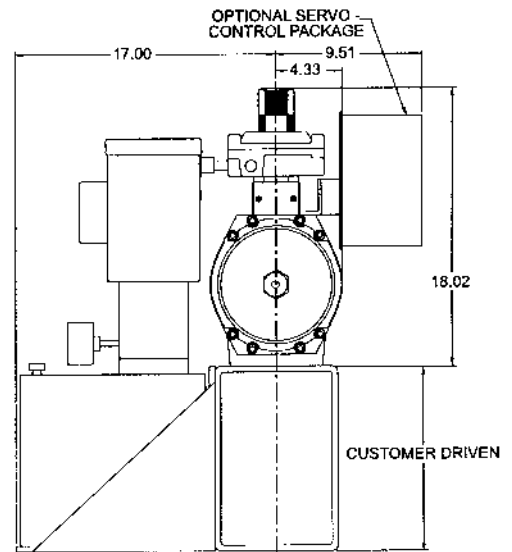
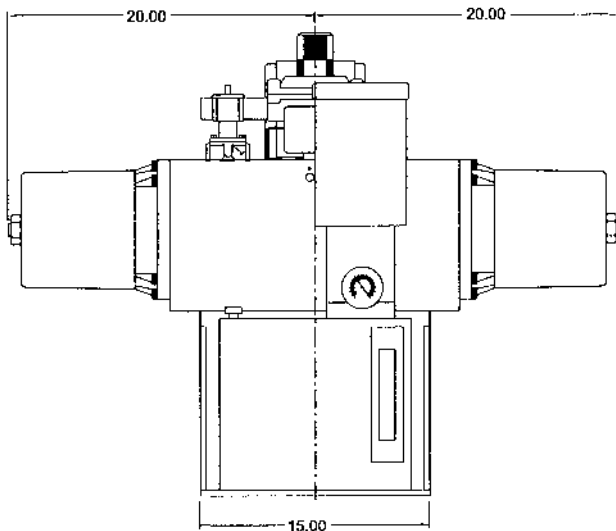
| Type | HYDRAULIC PRESSURE | | | SPRING | | |
|---------------------|--------------------|-------|-------|--------------------|-------|-------|
| | Opens CCW Rotation | | | Closes CW Rotation | | |
| | 0° | 60° | 90° | 90° | 30° | 0° |
| RCI 230SRH-100/M404 | 830 | 310 | 400 | 635 | 309 | 460 |
| RCI 240SRH-100/M404 | 1665 | 665 | 840 | 1330 | 620 | 930 |
| RCI 250SRH-100/M404 | 2745 | 975 | 1240 | 1990 | 930 | 1415 |
| RCI 260SRH-100/M404 | 5530 | 2125 | 2655 | 4070 | 1990 | 3010 |
| RCI 265SRH-100/M404 | 7149 | 2782 | 3767 | 6337 | 3135 | 4375 |
| RCI 270SRH-100/M404 | 11154 | 4290 | 5310 | 8410 | 3980 | 5105 |
| RCI 280SRH-100/M404 | 22125 | 8850 | 11060 | 17170 | 8320 | 12480 |
| RCI 88SRH-100/M404 | 44250 | 17700 | 22125 | 34295 | 16595 | 24870 |
| RCI 90SRH-100/M404 | 44250 | 17257 | 21240 | 33630 | 15930 | 24337 |
| RCI 100SRH-100/M404 | 88500 | 35400 | 44250 | 68587 | 33187 | 49737 |



RCI 230, 250, 270

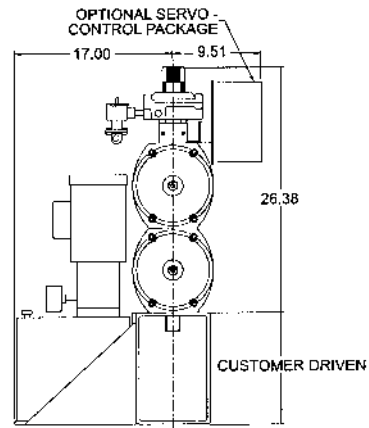
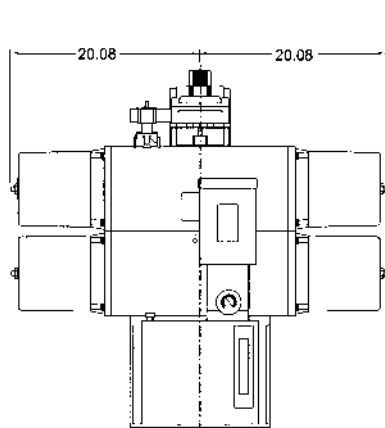


RCI 240, 260

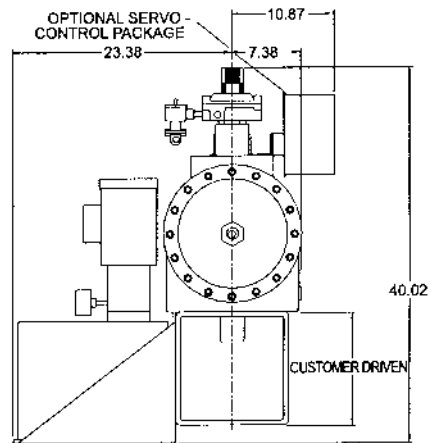
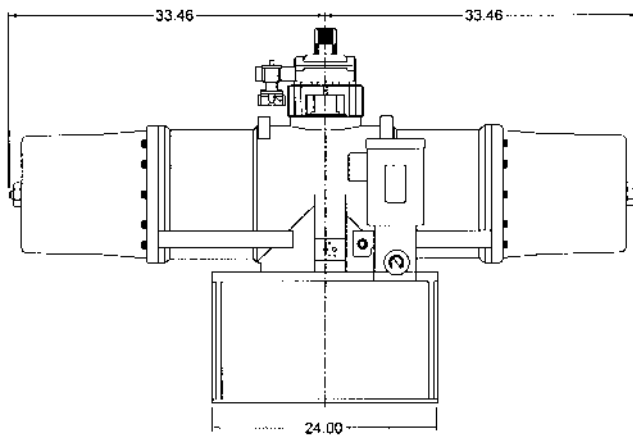


RCI 280

| | A | B | C |
|-----------|-------|------|------|
| RCI 230SR | 11.51 | 7.7 | -- |
| RCI 240SR | 11.51 | 7.7 | 7.7 |
| RCI 250SR | 13.36 | 11.2 | -- |
| RCI 260SR | 13.36 | 11.2 | 11.2 |
| RCI 270SR | 17.02 | 20.1 | -- |



RCI 88-SR



RCI 100-SR